



**Meadowbank Cottages Boyn Hill Road, Maidenhead, SL6 4HR**  
**£495,000 Freehold**

CHAIN FREE Built in 2012 by a reputable local builder, this end of terrace house offers light, airy and spacious accommodation. Schools are close by and local shops are on Wootton Way. Maidenhead train station, including the Elizabeth Line and the town centre are within walking distance. Outside, there is a good sized garden with two allocated parking spaces

### **Side Entrance Door**

Staircase rising to the first floor

### **Sitting Room**

Wall-mounted light fittings, bay window with adjacent window

### **Cloakroom**

Close coupled WC, wash hand basin with tiled surround, cupboard below

### **Kitchen**

A modern and well appointed kitchen fitted with a range of contemporary wall and base units providing ample storage, work surfaces, integrated oven with gas hob and extractor hood above, recessed ceiling spotlights and under-unit lighting, breakfast bar, integrated fridge/freezer, washing machine and dishwasher, tiled flooring

### **First Floor Landing**

Storage cupboard with slatted shelving, access to partly boarded loft

### **Bathroom**

White suite comprising panelled bath with wall mounted shower attachment, shower screen, pedestal wash basin, WC, heated towel rail, tiled flooring

### **Bedroom 1**

Built in cupboard

### **Bedroom 2**

### **En suite Shower Room**

Shower enclosure with glazed screen, wash hand basin and WC, chrome heated towel rail, tiled flooring

### **Outside**

Allocated parking for 2 cars, side access leading to rear garden with grass and patio area

Floor Plan

Approximate Floor Area = 82.6 sq m / 889 sq ft      Meadowbank Cottages

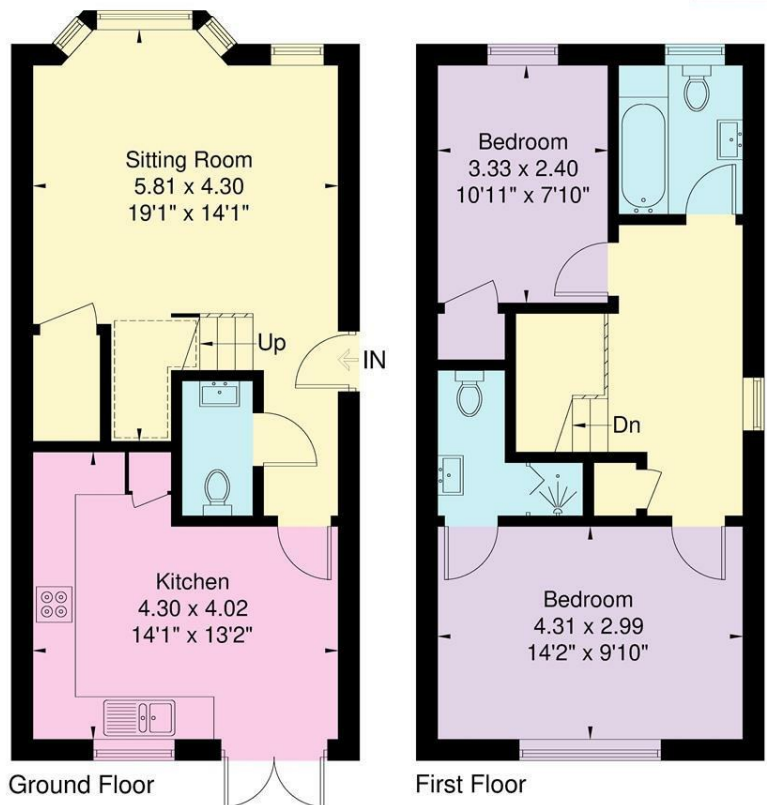
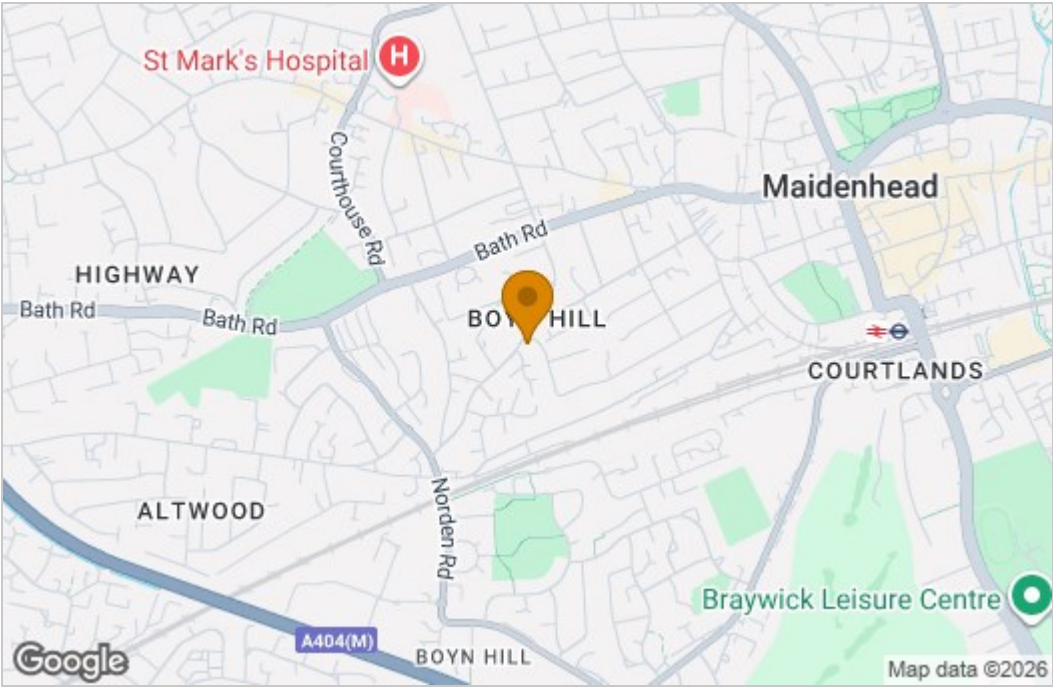
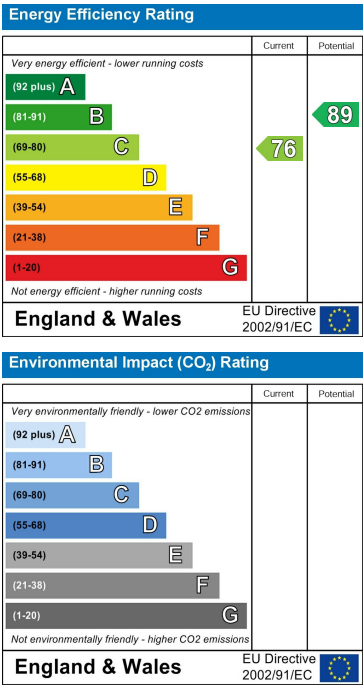


Illustration for identification purposes only, measurements are approximate, not to scale.

Area Map



Energy Efficiency Graph



These particulars, whilst believed to be accurate are set out as a general outline only for guidance and do not constitute any part of an offer or contract. Intending purchasers should not rely on them as statements of representation of fact, but must satisfy themselves by inspection or otherwise as to their accuracy. No person in this firm's employment has the authority to make or give any representation or warranty in respect of the property.